

BLEED (VENT) VALVE

Pressure Rating upto 6,000 PSI

Design No. AVV (Type)

FEATURES:

- ☑ Bar Stock design.
- ☑ Pressure rating 6,000 PSI.
- ☑ Option of regulating method.

MATERIALS OF CONSTRUCTION

| Parts | Valve Body Materials | |
|----------------------------|----------------------|--------------|
| | 316 Stainless Steel | Carbon Steel |
| Grade / ASTM Specification | | |
| Stem | SS 316 / A 276 | |
| Body* | SS 316 / A 276 | 1018 / A 108 |
| Safety Back Stop Screw | SS 316 / A 276 | |
| Safety Vent Tube | SS 316 / A 269 | |

*Carbe Steel bodies are plated with cadinum white dichromate for corrosion protection.

TECHNICAL DATA

| Material | Temperature Rating | Pressure Rating |
|--------------|---------------------------------|----------------------------------|
| SS 316 | -65°F to 850°F (-54°C to 454°C) | 10000 psi (689 bar)@100°F (38°C) |
| Carbon Steel | -20°F to 450°F (-29°C to 232°C) | 10000 psi (689 bar)@100°F (38°C) |

PART No. & TABLE OF DIMENSIONS

| Part No. | End Connection | | Orifice mm | Cv | Dimensions (mm) | | | | F Hex |
|----------|----------------|------------------------------|---------------|------|-----------------|-------|-------|-------|----------|
| | Inlet | Outlet | | | L | L1 | L2 | D | |
| AVV/02N | 1/8" Male NPT | O.D. 3/16 Tube Stub | 3.2 | 0.25 | 34.03 | 23.87 | 10.41 | 19.05 | 5/8" |
| AVV/04N | 1/4" Male NPT | | 3.2 | 0.25 | 34.03 | 23.87 | 10.41 | 17.52 | 5/8" |
| AVV/06N | 3/8" Male NPT | | 3.2 | 0.25 | 37.33 | 26.16 | 11.17 | 22.35 | 7/8" |
| AVV/08N | 1/2" Male NPT | | 3.2 | 0.25 | 37.33 | 26.16 | 11.17 | 16.00 | 7/8" |

All dimensions shown are for reference only and are subject to change.

APPLICATIONS

Bleed Valves are designed to vent the signal line pressure to atmosphere before an instruments is removed and to assist in calibration of control devices.

FACTORY TEST

Every Valve is tested with the Nitrogen @ 68 bar (1000 psi) for leakage.

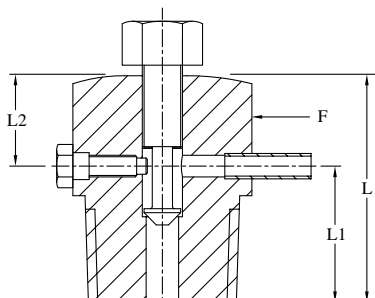
ORDERING INFORMATION, Please specify followings :

- Material of construction
- Type of Vent valves

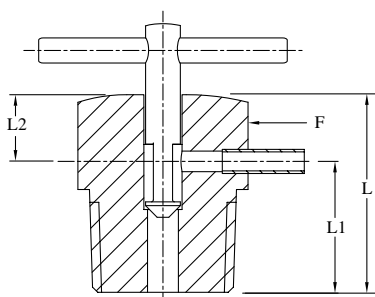
Note : Dimensions are reference only and are subject to change.

Warning for Your Safety

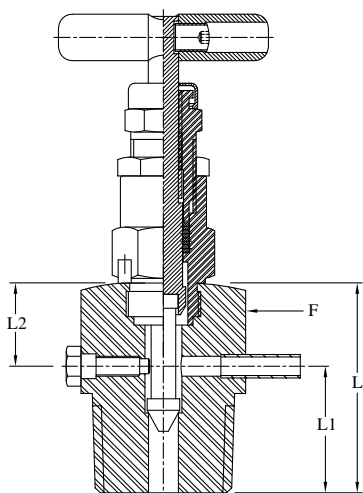
The system designer and user have the sole responsibility to select products suitable for their special application requirements to ensure the proper installation. Operation and maintenance of the product. Application details, material compatibility and product ratings should all be considered in the individual selection. Improper selection or use of products can cause property damage or personal injury. Arya accept no liability for any improper selection, installation, operation or maintenance.



Type - A



Type - B



Type - C



Arya Crafts & Engineering Pvt. Ltd.

102, Vora Industrial Estate #4, Navghar,
Vasai Road (E), Mumbai 401 210, India.
Tel +91-250-239 2246 / 0046 Fax +91-250-239 3423
Email : engcrafts@vsnl.net http://www.aryaengg.com